

BREAK TIME! Play a waltz, then play whatever we feel like

Ashokan Farewell

Jay Ungar
1983

Musical score for 'Ashokan Farewell' in D major, 3/4 time. The score consists of four staves of music. The first staff starts with a repeat sign and includes chords D, D/F#, G, and Em. The second staff starts at measure 5 and includes chords D, Bm, G, A7, A7, and D. The third staff starts at measure 11 and includes chords D, D7/F#, G, D, Bm, A, and A7. The fourth staff starts at measure 19 and includes chords D, C, G, D, Bm, A7, and D.

The Lover's Waltz

Molly Mason & Jay Ungar

Musical score for 'The Lover's Waltz' in D major, 3/4 time. The score consists of three staves of music. The first staff starts with a repeat sign and includes chords D, G, D, D, G, Em, and A7. The second staff starts at measure 9 and includes chords Em, G, D, G, Em, and A. The third staff starts at measure 17 and includes chords D, Em7, D/F#, G, D, Bm, Em, and A7. The fourth staff starts at measure 25 and includes chords G, A, Bm, G, A7, D(G), and D.

Midnight on the Water

Luke Thomasson

Musical score for 'Midnight on the Water' in D major, 3/4 time. The score consists of four staves of music. The first staff starts with a repeat sign and includes chords D and D. The second staff starts at measure 5 and includes chords D, G, D, A, D, and D. The third staff starts at measure 10 and includes chords D, D, Em, and Bm. The fourth staff starts at measure 18 and includes chords G and D. The fifth staff starts at measure 22 and includes chords D, G, D, A, D, and D.

Valerie's Waltz

Marianne Danehy

Musical score for Valerie's Waltz, 3/4 time signature, G major. The score consists of four staves of music. Chords are indicated above the notes. The first staff starts with a treble clef, a key signature of one sharp (F#), and a 3/4 time signature. The melody is written in a simple, waltz-like style. The chords are: D, A, G, D, G, D, Em, A. The second staff continues with: D, A, G, D, G, D, Em, A, D. The third staff continues with: G, D, G, D, G, D, Em, A. The fourth staff continues with: G, D, G, Bm, G, D, Em, A, D.

WESTPHALIA WALTZ

G Major

Musical score for Westphalia Waltz, 3/4 time signature, G major. The score consists of six staves of music. Chords are indicated above the notes. The first staff starts with a treble clef, a key signature of one sharp (F#), and a 3/4 time signature. The melody is written in a simple, waltz-like style. The chords are: A, G, Bm, Em, Bm, G. The second staff continues with: E, Am, D, Am, D. The third staff continues with: 1. D7, G, 2. The fourth staff continues with: G, B, G, Bm, Em, Bm, G. The fifth staff continues with: Am, D, Am, G#+5, C, D. The sixth staff continues with: 1. G, 2. G.

Tennessee Waltz

Pee Wee King

Musical score for Tennessee Waltz, 3/4 time signature, G major. The score consists of four staves of music. Chords are indicated above the notes. The first staff starts with a treble clef, a key signature of one sharp (F#), and a 3/4 time signature. The melody is written in a simple, waltz-like style. The chords are: D, D7, G, D, A. The second staff continues with: D, G, D, A, D. The third staff continues with: D, D7, G, D, D, A. The fourth staff continues with: D, D7, G, D, A, D.

TOMBIGBEE WALTZ

traditional

G (GM7) (G6) G

Am (Am6) C D7

G (GM7) (G6)

Am C D G

G G/B C G

Am C D

G G/B C G

Am C D G

Other Break Tunes:

Chinquapin Huntin'

Musical score for 'Chinquapin Huntin'' in G major (one sharp) and 4/4 time. The score consists of three staves of music. The first staff starts with a treble clef, a key signature of one sharp (F#), and a 4/4 time signature. It features a series of eighth notes and quarter notes. Above the staff, the chord 'A' is written above the first measure, 'D' above the 5th measure, and 'A' above the 9th measure. The second staff begins at measure 6 and continues the melodic line. Above it, 'A' is written above the 6th measure, 'D' above the 7th, and 'A' above the 8th. The third staff begins at measure 10. Above it, 'D' is written above the 10th measure, 'E' above the 11th, 'D' above the 12th, and 'E' above the 13th. The piece concludes with a double bar line and repeat dots.

Pig Ankle Rag

Musical score for 'Pig Ankle Rag' in G major (one sharp) and 4/4 time. The score consists of six staves of music. The first staff starts with a treble clef, a key signature of one sharp (F#), and a 4/4 time signature. It features a series of eighth notes and quarter notes. Above the staff, the chord 'A' is written above the 2nd measure and 'D' above the 4th measure. The second staff begins at measure 5. Above it, 'A' is written above the 5th measure and 'D' above the 7th. The third staff begins at measure 9. Above it, 'G' is written above the 9th measure, 'D' above the 10th, 'A' above the 11th, and '1. D' above the 12th. A second ending bracket labeled '2. D' spans measures 12 and 13. The fourth staff begins at measure 14. Above it, 'A' is written above the 14th measure and 'D' above the 16th. The fifth staff begins at measure 18. Above it, 'A' is written above the 18th measure, 'D' above the 20th, and 'G' above the 22nd. The sixth staff begins at measure 23. Above it, 'D' is written above the 23rd measure, 'A' above the 24th, and '1. D' above the 25th. A second ending bracket labeled '2. D' spans measures 25 and 26. The piece concludes with a double bar line and repeat dots.

Road to Malvern

Jim Childress

Musical score for 'Road to Malvern' in G major, 4/4 time. The score consists of four staves of music. Chords are indicated above the notes: A, D, A, E, A, E, A, D, A, A, E, A, A. The piece includes a repeat sign with first and second endings.

Five Miles from Town

Clyde Davenport- Peghead Nation
GES Finale

Musical score for 'Five Miles from Town' in G major, 4/4 time. The score consists of six staves of music. Chords are indicated above the notes: D, A, Bm, D, A, D, A, D, A, D, Bm, D, A, D, A, D. The piece includes a repeat sign with first and second endings and a key signature change to D major for the final section.

Crook Brothers Breakdown

(Trevor Stuart - fiddle)

From Tater Joes
GES Finale V01

1 A D

4 G D

7 A D D

10 B Bm

13 D D

16 A D D

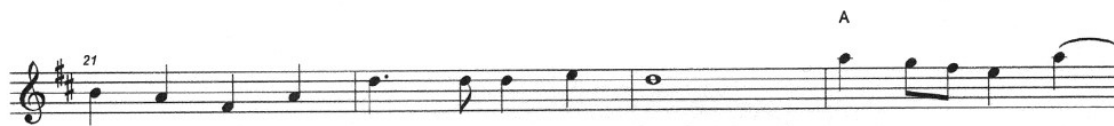
See David Bragger & Sausage Grinder on Youtube:
<https://www.youtube.com/watch?v=DFyYhF839tU>

Polkas:

Red Hills Polka

Allegretto (♩ = 202)

D



John Ryan's Polka



Musical score for John Ryan's Polka, featuring four staves of music in G major (one sharp) and 4/4 time. The score includes chord markings above the notes and repeat signs with first and second endings.

Staff 1: Chords: D, G, D, G, D, A

Staff 2: Chords: D, G, D, A, 1. D, 2. D

Staff 3: Chords: D, G, D, A

Staff 4: Chords: A, G, D, A, 1. D, 2. D

John Short's Tune

Traditional-From Jana Jae
GES-Finale V02



Musical score for John Short's Tune, featuring three staves of music in G major (one sharp) and 4/4 time. The score includes chord markings above the notes and repeat signs with first and second endings.

Staff 1: Chords: D, A, D, A, D

Staff 2: Chords: D, G, A

Staff 3: Chords: A, D, A, D, 1., 2.